

Office Space For Lease



2299 N. Clybourn Chicago, Illinois 60614

Located at the intersection of N. Clybourn Ave and N. Ashland Ave 2299 N. Clybourn is also easily accessible to I-90 and I-94. Both national and boutique retailers serve the dense population of 24,000 people in a half mile radius including DePaul University.

Suite Size: 1506 Square Feet

Lease Rate: \$30.00 Gross

Zoned: B1-2

Utilities: Separately metered paid by tenant

The space is built out for office use as it's tall windows give great presence and visibility to the heavily trafficked street and inside are beautifully built out work spaces, and kitchen.

- 5 private offices - bathroom - kitchenette

GROUND FLOOR



ASCOT

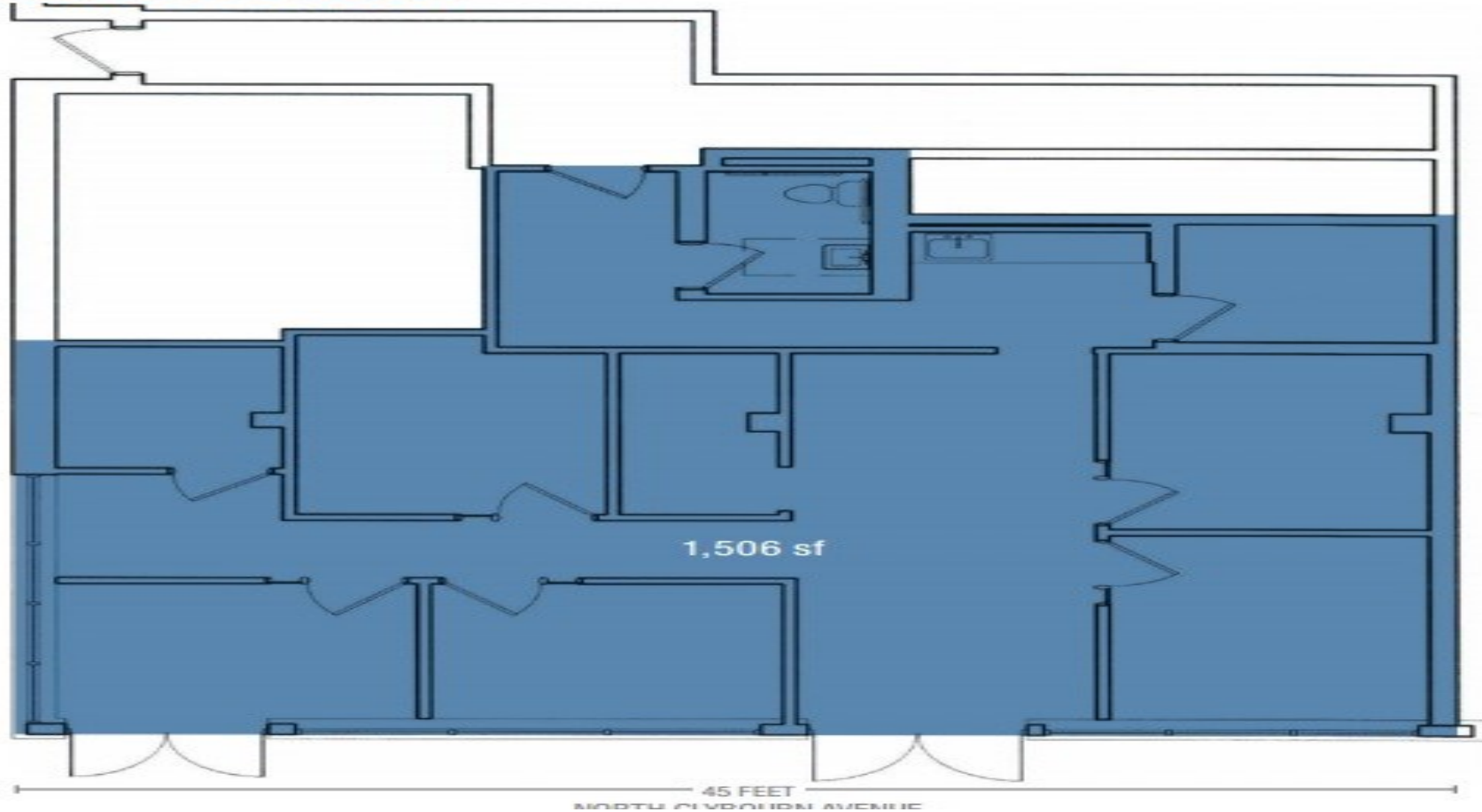
Ascot Realty Group, Inc.
566 W. Lake St., Suite 101
Chicago, IL 60661

For more information contact:
Denis Ascot 312-849-3100
dascot@ascotrealty.com
ascotrealty.com

All information furnished is from sources deemed reliable. No representation is made as to the accuracy thereof and is submitted subject to errors, omissions, change of price, prior sale or withdrawal without notice.

Office Space For Lease

GROUND FLOOR



ASCOT

2299 N. Clybourn Chicago, Illinois 60614 Floor Plan

Ascot Realty Group, Inc.
566 W. Lake St., Suite 101
Chicago, IL 60661

For more information contact:
Denis Ascot 312-849-3100
dascot@ascotrealty.com
ascotrealty.com

All information furnished is from sources deemed reliable. No representation is made as to the accuracy thereof and is submitted subject to errors, omissions, change of price, prior sale or withdrawal without notice.